

SPEEDLAN Single Device Adapter User Guide

for Win95, 98 & NT

Version 3.2

For use with these products:

SD-24-PA-8410 (PCMCIA)

SD-24-PA-8411 (ISA)

SD-24-PA-8412 (PCI)



941-358-9283

941-355-0219 FAX

www.speedlan.com

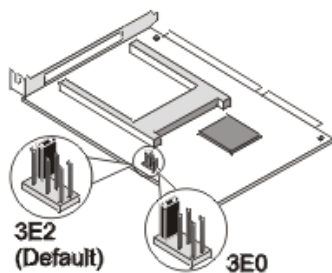
1748 Independence Blvd. C-5 Sarasota, FL 34234

Installing the SPEEDLAN Single Device Adapter for Win95, 98 & NT

Installation is a three-part process.

- **Part One: Installing the ISA or PCI Card Adapter Board on a Desktop PC**
If you do not currently have a PCMCIA Card Slot available, you must install the provided PC Card Adapter.
If you own a desktop PC, start with Part One. If you have an available PCMCIA Card Slot on your desktop PC or laptop, proceed to *Part Two: Installing the PCMCIA Radio Card*.
- **Part Two: Installing the PCMCIA Radio Card**
Part Two consists of installing the radio and ISP Client software.
If you own a laptop, start with Part Two.
- **Part Three: Installing the Software Drivers**
Part Three explains how to install the software driver.

Part One: Installing the ISA or PCI Card Adapter Board on a Desktop PC



The Adapter Board supports two I/O addresses:

- 3E0-3E1 (Win 95/98 suggested)
- 3E2-3E3 (Factory Default) (Win NT suggested)

If you are using the PCMCIA Radio Card, especially for Win NT, you must go into your BIOS settings and reserve IRQ "10" or "11" for a "Legacy ISA" Card.

For most computers you do not need to change the factory default. The Adapter Board is not "Plug & Play." You will need to introduce the card to your operation system as described below.

Note: The jumper settings only apply to the ISA adapter.

Win 95/98 Instructions:

1. Make sure your computer is shut down and the power is disconnected.
2. Remove the cover from your computer.
3. Insert the adapter card into an available slot on your motherboard. Press down firmly until it connects. Screw in adapter plate. Then, put the cover back on and restart your computer.
4. If Windows does not automatically detect the new hardware from the Control Panel (Start + Settings + Control Panel), double-click Add New Hardware. Follow the installation prompts. Windows will detect the new hardware.
Note: Click Details if you want to verify that the PCIC Compatible PCMCIA Controller is installed. Click Finish to exit.
Note: If the PCMCIA Wizard appears, select No throughout the installation dialog boxes. Then, click Finish. Shut down the computer, and turn off the power.
5. Proceed to *Part Two: Installing the PCMCIA Radio Card*.

Win NT Instructions:

Before installing (in a Windows NT environment), set the IRQ you intend to use to a legacy device in your system BIOS. Make sure your computer is shut down and the power is disconnected.

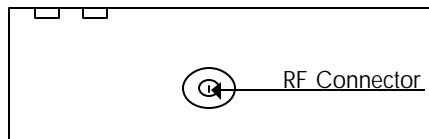
1. Remove the cover from your computer.
2. Insert the adapter card into an available slot on your motherboard. Press down firmly until it connects. Screw in adapter plate. Then, put the cover back on and restart your computer.
3. If Windows does not automatically detect the new hardware, from the Control Panel (Start + Settings + Control Panel), double-click the Devices icon.
4. Scroll down and select PCMCIA. Then, click Startup.
5. Under the Startup Type section, select the Automatic option. Click OK. Click Close.
6. Shut down your computer.
7. Proceed to *Part Two: Installing the PCMCIA Radio Card*.

Part Two: Installing the PCMCIA Radio Card

These steps apply to desktop PCs or laptop computers and are independent of any operating system.

Note: Make sure your desktop PC or laptop computer is shut off before performing these steps.

1. At the end of the PCMCIA Radio Card, pull out the plug. The figure below displays the plug pulled out exposing the RF connector (where arrow is pointing).



2. Slide the card into the Adapter Board until it locks.
3. Attach the pigtail connector to the RF connector on the PCMCIA Radio Card.
4. Proceed with *Part Three: Installing the Software Drivers*.

Part Three: Installing the Software Drivers

During the initial installation, you will need to know three pieces of information: Station's License Key, Pass Phrase, and Data Rate. This information can be obtained from your network administrator or ISP. This information may have been listed on the back page of this *User Guide*.

Note: Do not use the Install Script INF file from the Licensing web site.

Note: If the Windows 95 or 98 operating system automatically loads the WaveLAN software drivers instead of the SPEEDLAN software drivers, follow the directions under *Deleting the WaveLAN Software Driver* (see gray shaded section after Win 95/98 Instructions).

Win 95/98 Instructions:

These directions are the same whether you own a desktop PC or a laptop. When your computer boots, it should automatically detect the new PCMCIA Radio Card.

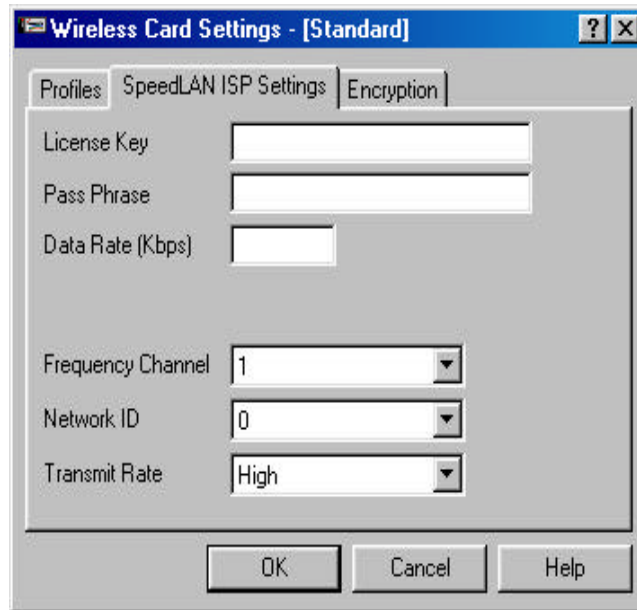
Warning! Do not reboot the computer without the PCMCIA Radio Card installed. After you successfully logged in and rebooted the computer, then you are ready install the PCMCIA Radio Card.

Follow these steps to install the correct driver for your radio subscriber kit:

1. Windows may not automatically detect the new hardware. From the Control Panel (Start + Settings + Control Panel), double-click the Add New Hardware icon.
2. Insert the PCMCIA Radio Card Driver Disk in the 3.5 disk drive. Next, find the PCMCIA Radio Card Driver Disk (i.e., A: drive).
3. Click Next and follow the installation prompts. (Make sure you select the Search for best drive recommended option). Windows will locate the SPEEDLAN ISP Driver Card. Click Next. Windows will load the SPEEDLAN ISP Driver Card.
Note: If prompted, insert the Windows Operating System CD. Also, if the Not Installed Warning box appears anytime throughout the installation, click OK and you will be returned to the previous dialog box.
4. When the installation is complete, the Wireless Card Settings [Standard] dialog box appears with the SPEEDLAN ISP Settings tab active (appears as shown on the dialog box on next page) and follow steps a through c below.
 - a. License Key
The License Key is derived from the ISP card's internal MAC address, your operating system, Pass Phrase, and Data Rate (Kbps) settings. This code must be acquired by your network administrator or ISP.
 - b. Pass Phrase
This will be a special pass phrase that is given to you by your network administrator or ISP that specifies which base stations you will be able to access. This is your key to getting access on a given network.
 - c. Data Rate (Kbps)
Again, this can be obtained from your network administrator or ISP.

Note: The Frequency Channel, Network ID and Transmit Rate need to match the ISP Base Station. Other information may be found on the back of this *User's Guide*.

5. When you are finished, click OK. Next, click Yes. Then, click Finish. Click OK again to restart your computer.
6. Now that the radio card is installed, the next step is to enter your protocol and appropriate network information. This information should only be completed by your network administrator or ISP. After making these changes, continue the installation as explained in this User Guide.



Deleting the WaveLAN Software Driver:

1. If the following WaveLAN software driver files load, please delete these files:
 - WINDOWS/INF/OTHER/PROVIDER - LUCENT TECHNOLOGIESWAVELAN.INF
 - WINDOWS/INF/WVLAN41.INF
 - WINDOWS/INF/OTHER/LWVLAN41.INF
 - WINDOWS/SYSTEM/WVLAN41.SYS
 - WINDOWS/SYSTEM/WVLANUIF.VXD
 - WINDOWS/SYSTEM/WVLAN41.HLP
 - WINDOWS/SYSTEM/WVLAN41.CNT
 - WINDOWS/SYSTEM/WV41INST.DLL
 - WINDOWS/SYSTEM/WVLANINST.DLL
 - WINDOWS/SYSTEM/WVLAN.HLP
 - WINDOWS/SYSTEM/WVLAN.CNT
 - WINDOWS/SYSTEM/WVLAN.CPL
2. Then, reinstall the SPEEDLAN software driver files by choosing Control Panel + Add New Hardware + Network Adapter. Next, insert the SPEEDLAN software driver disk. Then, follow the installation prompts and restart your computer.

Win NT Instructions:

1. Restart your computer. Your computer will reboot. Then, from the Control Panel (Start + Settings + Control Panel), double-click the Network icon.
2. Click the Adapters tab. Click Add. Then Select a Network Adapter dialog box appears. Click Have Disk. Locate where the PCMCIA Radio Card Driver is stored, which is the location of your 3.5 floppy drive (i.e., A: drive). Click OK. The Select OEM Option dialog box appears displaying the SPEEDLAN ISP Driver Card. (This is used to select the software you are setting up on your computer.) Click OK.
3. When the installation is complete, the Wireless Card Settings [Standard] dialog box appears with the SPEEDLAN ISP Settings tab active (see dialog box on previous page), and follow steps 4a through 4c. Note: At some point in the installation the Not Installed Warning box may appear. To clear this warning, click OK.

4. Enter the following information:

a. License Key

The License Key is derived from the ISP card's internal MAC address, your operating system, Pass Phrase, and Data Rate (Kbps) settings.

This code must be acquired by your ISP.

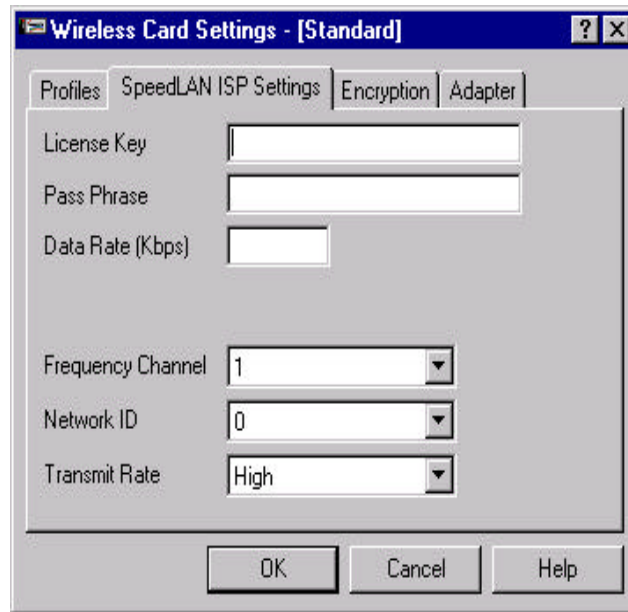
b. Pass Phrase

This will be a special pass phrase that is given to you by your network administrator or ISP that specifies which base stations you will be able to access. This is your key to getting access on a given network.

c. Data Rate (Kbps) - (get from your network administrator or ISP)

Note: The 4a through 4c items (above) can be obtained from your network administrator or ISP. The Frequency Channel, Network ID and Transmit Rate need to match the ISP Base Station. Other information may be found on the back of this *User Guide*.

Note: After making these changes, continue the installation as explained in this *User Guide*.



6. When you are finished, click OK.

7. The Adapter tab appears (on the SPEEDLAN ISP Driver Properties dialog box). Click the Basic tab. Select an available I/O Base Address and Interrupt (IRQ). For example, "300" and "10" (or "11") are normally available. Click OK. Click Close.

8. Restart your computer when prompted.

9. After your computer boots, enter your IP Address if prompted. If your computer does not prompt you to enter it, from the Control Panel, double-click the Network icon. The Network dialog box appears.

10. In this step you are going to select your protocol (IPX, TCP/IP, etc.) and enter the appropriate information. If your protocol is already selected, simply follow the prompts and restart your computer.

The rest of this section applies to TCP/IP only:

Verify that TCP/IP is selected. To add TCP/IP, click the Protocols tab and click Add. Select TCP/IP and click OK. On the TCP/IP Setup message box, you will be prompted to click Yes or No. Now do one of the following:

-Click Yes if your ISP uses a dynamic IP addressing method. If prompted load the Windows NT Operation System CD. (You may have to select I386 from this directory, and then follow the installation prompts.) After the Windows NT files are copied, TCP/IP will be displayed. Click Close. Shut down and restart your computer when prompted.

-Click No if your ISP has assigned you a static IP address. If prompted load the Windows NT Operation System CD. (You may have to select I386 from this directory, and then follow the installation prompts.) After the Windows NT files are copied, TCP/IP will be displayed. Click Close. The Microsoft TCP/IP Network dialog box appears. Since each network is different, please install the proper protocol information now for your particular network provided by your ISP or network administrator. Then, restart your computer when prompted.

Extra SPEEDLAN ISP Features:

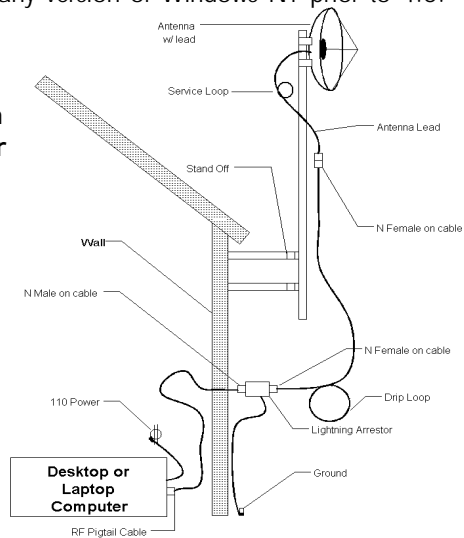
In some cases, you may need to change the PCMCIA Radio Card Default Frequency Channel which sets the radio frequency of your PCMCIA Radio Card. The default channel is Channel 3 (2.422 GHz). Please refer to the Channel information on the back cover of this *User's Guide*, or contact your ISP for the correct setting.

The Network ID is included for compatibility with Base Station software that supports multiple Network IDs. The default value is "0" and should be used unless instructed otherwise by the network administrator.

Note: This driver has not been tested with any version of Windows NT prior to 4.0.

Recommended Installation Diagram for SPEEDLAN Single Device Adapter

Included with the Wave Wireless Installation Kit (if purchased) is a standard antenna, lightning arrestor, waterproof insulation (coaxial sealant tape), electrical tape, brass ground rod clamps, low-loss RF cable, and zip ties.



Please provide the following reference information for your ISP client:

License Key: _____

Data Rate (kbps): _____

Pass Phrase (for access to the network up to 31 characters):

Check if Dynamic ___ or Static ___

IP Address: _____

Subnet Mask: _____

DNS Settings: _____

Other information that may be filled out by your Network Administrator:

Frequency Channel (to connect to base station): _____

Network ID (this value allows you to decide which ISP Base Station your computer can connect to): _____

Transmit Rate (bit rate of the transmitter): Select Fixed High Rate only.

Notes: _____



Wave Wireless Networking products are manufactured under a quality system certified to ISO 9001 specifications. All trademarks mentioned in this document are the property of their respective owners. Wave Wireless Networking and SPEEDCOM Wireless Corporation do not take responsibility for any damages incurred due to technical inaccuracies in this document. Contents are subject to change without notification. © 2000 Wave Wireless Networking. All rights reserved.